

Coffee with Bach

12 swingende Stücke

für 2 Violinen, Kontrabass

und Drums

(Swing-Besen)

Eine Pianobegleitung ist optional erhältlich,
Harmonien sind beigelegt

Joachim Johow

Inhalt:

1. Russian dreams
2. Fo(u)r friends
3. Bicycle waltz
4. Minor story
5. Bach would smile
6. Swinging regards
7. Coffee with Bach
8. Swinging round
9. Unisono swing
10. Swinging waltz
11. Cappuccino con Bach
12. A kiss for Bach

Das Cover-Foto ist von Joachim Johow

Kontrabass

1. Russian Dreams

im Swing zu spielen mit Bass und Becken

Joachim Johow

Presto

8

pizz

Musical notation for measures 1-7 in bass clef, 4/4 time. The first measure starts with a piano (p) dynamic and a pizzicato (*pizz*) instruction. The key signature has one flat (B-flat). The piece begins with a series of eighth and quarter notes, followed by a repeat sign.

8

Musical notation for measures 8-14 in bass clef, 4/4 time. The notation continues with quarter and eighth notes.

15

Musical notation for measures 15-20 in bass clef, 4/4 time. The key signature changes to two sharps (F# and C#).

21

Musical notation for measures 21-26 in bass clef, 4/4 time. The key signature changes to one flat (B-flat). The piece ends with a first and second ending bracket.

27

Musical notation for measures 27-32 in bass clef, 4/4 time. The key signature changes to two sharps (F# and C#).

33

Musical notation for measures 33-37 in bass clef, 4/4 time. The key signature changes to one flat (B-flat).

38

Musical notation for measures 38-42 in bass clef, 4/4 time. The key signature changes to two sharps (F# and C#).

43

Musical notation for measures 43-49 in bass clef, 4/4 time. The key signature changes to one flat (B-flat).

50

Musical notation for measures 50-55 in bass clef, 4/4 time. The key signature changes to two sharps (F# and C#).

56

Musical notation for measures 56-61 in bass clef, 4/4 time. The key signature changes to one flat (B-flat).

62

Musical notation for measures 62-68 in bass clef, 4/4 time. The key signature changes to two sharps (F# and C#). The piece concludes with a final double bar line.

2. Fo(u)r friends

Joachim Johow
15.3.13

Presto molto (swing)



7



14



21



28



35



41



45



3. The bicycle waltz

Joachim Johow
17.3.13

Presto molto (swing)



10



20



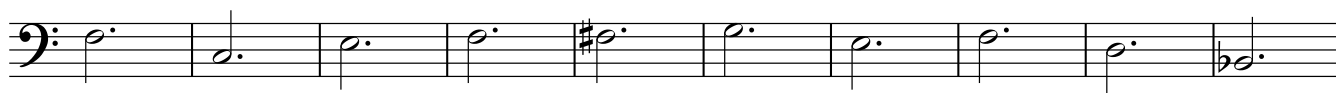
29



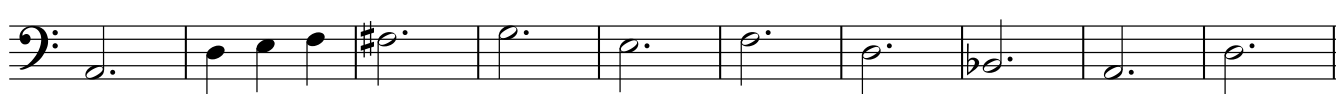
37



47



57



67



77



86



4. Minor story

Joachim Johow
15.3.13

Presto molto (swing)



7



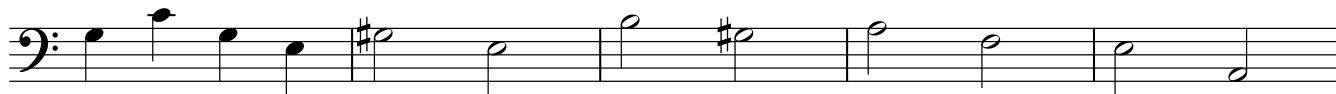
14



20



27



32



37



44



50



53



5. Bach would smile

Joachim Johow
15.3.13

Allegro (swing)



8



15



21



28



35



41



47



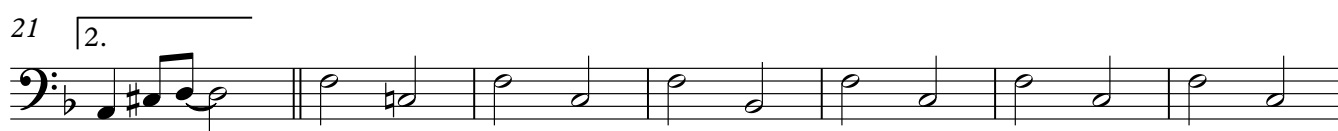
53



6. Swinging regards

Joachim Johow

15.3.13

Presto molto (swing)

7. Coffee with Bach

Joachim Johow
17.3.13

Andante (swing)

♩=100



7



13



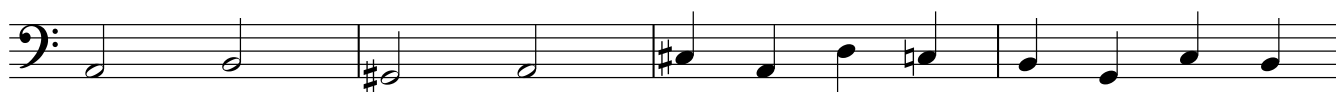
19



25



32



36



8. Swinging Round

Kontrabass



Joachim Johow

2012

Moderato



6



11



17



23



28



34



40



46



50



☒ ☒ ~~in~~ sono swing

Joachim Johow
15.3.13

Presto molto (swing)



6



12



18



25



31



37



43



49



53



Kontrabass

10. Winging wa

Joachim Johow

15.3.13

Presto molto (swing)



9



17



26



36



45



11. Cappuccino con Bach

Joachim Johow
17.3.13

Presto molto (swing)



Kontrabass

12. A \square sis \square o \square ch

Allegro (swing)

Joachim Johow
2013



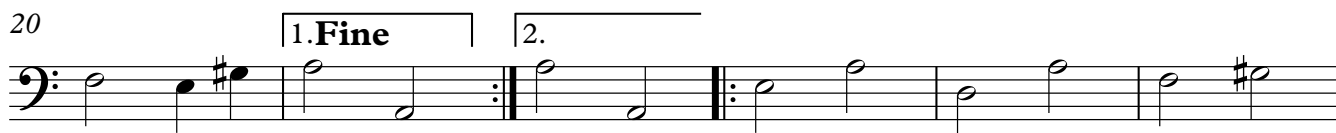
7



14



20



26

