

Violoncello 1

with regards to Ginger and the Boathouse cello choir

1. Ginger's tea time

Joachim Johow
2014

Moderato (♩=100)
4/4

mf

10

15

20

25

30

36

p

41

mp

47

4

56

61

66

1. Ginger's tea time

Joachim Johow
2014

Moderato (♩=100)

mf *mp*

8

13

18

24

33

39

44

49

54

pizz

60

arco

64

Violoncello 3

with regards to Ginger and the Boathouse cello choir

1. Ginger's tea time

Joachim Johow
2014

Moderato (♩=100)

5

mfz

Musical notation for measures 1-4 in bass clef, 4/4 time, key of B-flat major. The music consists of eighth notes and quarter notes. A dynamic marking of *mfz* is present at the beginning.

5

mp

Musical notation for measures 5-8 in bass clef, 4/4 time, key of B-flat major. The music consists of eighth notes and quarter notes. A dynamic marking of *mp* is present at the beginning.

9

Musical notation for measures 9-12 in bass clef, 4/4 time, key of B-flat major. The music consists of eighth notes and quarter notes.

13

Musical notation for measures 13-16 in bass clef, 4/4 time, key of B-flat major. The music consists of eighth notes and quarter notes.

17

mp

Musical notation for measures 17-20 in bass clef, 4/4 time, key of B-flat major. The music consists of eighth notes and quarter notes. A dynamic marking of *mp* is present at the beginning.

21

Musical notation for measures 21-23 in bass clef, 4/4 time, key of B-flat major. The music consists of eighth notes and quarter notes.

24

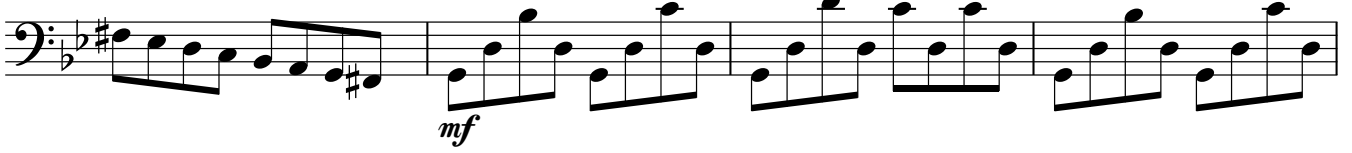
4

Musical notation for measures 24-26 in bass clef, 4/4 time, key of B-flat major. The music consists of eighth notes and quarter notes. A final measure contains a whole rest with a '4' above it, indicating a four-measure rest.

31



36



40



45



49



54



58



64



67



1. Ginger's tea time

Joachim Johow
2014

Moderato (♩=100)

pizz

6

12

18

24

30

36

41

arco *mf*

46

51

57

64