

Pizza a tre

Andante

2. Pizza Verdi (Rucola u. Parmaschinken)

J.Johow
1.6.2014

$\text{♩} = 60$

Flöte 1

Flöte 2

Klarinette in B

Klavier

Kontrabass

mf

pp

pp

Andante

pizz

6

Fl.

Fl.

Kl.

Klav.

Kb.

f

f

10

Fl.

Fl.

Kl.

Klav.

Kb.

f

mf

14

Fl. Klav. Kb.

This system covers measures 14 to 17. It features two Flute parts (Fl.), a Clarinet part (Kl.), a Piano part (Klav.), and a Bassoon part (Kb.). The piano part has a dynamic marking of *f*. The flute parts play a melodic line with frequent triplets. The clarinet part plays a steady eighth-note accompaniment, also featuring triplets. The bassoon part provides a simple harmonic accompaniment.

18

Fl. Klav. Kb.

This system covers measures 18 to 21. The piano part has dynamic markings of *mf* and *mp*. The flute parts continue with their melodic lines, including a *mf* dynamic marking. The clarinet part has a *mf* dynamic marking. The bassoon part remains in its accompaniment role.

22

Fl. Klav. Kb.

This system covers measures 22 to 25. The piano part features a complex melodic line with many triplets. The flute parts continue with their melodic lines. The clarinet part has a *mf* dynamic marking. The bassoon part continues with its accompaniment.

26

Fl. *mf*

Fl.

Kl. *mf*

Klav. *mp*

Kb.

30

Fl. *f*

Fl. *f*

Kl. *f*

Klav. *f*

Kb.

33

Fl. *rit.*

Fl.

Kl.

Klav. *p*

Kb. *rit.*

Pizza a tre

2. Pizza Verdi (Rucola u. Parmaschinken)

J.Johow
1.6.2014

Andante

$\text{♩} = 60$

2

mf

7

12

16

19

mf

23

26

mf

30

f

33

rit.

Pizza a tre

2. Pizza Verdi (Rucola u. Parmaschinken)

J.Johow
1.6.2014

Andante

♩=60

2

mf

8

f 3 3 3 3

12

3 3 3 3 3 3 3 3 3 3

15

3 3 3 3 3 3 3 3 3 3 3 3

18

3 3 3 3 *mf*

23

3 3

27

mf 3 3 3 3 3 3 3 3 3 3 3 3

30

3 3 3 3 *f* 3 3 3 3 3 3 3 3

33

3 3 3 3 3 3 3 3 rit. .

Pizza a tre

2. Pizza Verdi (Rucola u. Parmaschinken)

J.Johow
1.6.2014

Andante

♩=60

2

pp

8

f 3 3 3 3

12

15

18

mf

23

27

mf

30

f 3 3 3 3 3 3 3 3 3 3 3 3

33

rit.

Pizza a tre

Klavier

2. Pizza Verdi (Rucola u. Parmaschinken)

J.Johow
1.6.2014

Andante $\text{♩} = 60$

Measures 1-4 of the piece. The music is in 4/4 time with a key signature of three flats. The right hand features a complex texture of chords and triplets, while the left hand plays a steady eighth-note accompaniment. A *pp* dynamic marking is present in measure 3.

Measures 5-7. The right hand continues with triplet patterns, and the left hand maintains its accompaniment. A *mf* dynamic marking is present in measure 7.

Measures 8-10. The right hand continues with triplet patterns, and the left hand maintains its accompaniment. A *f* dynamic marking is present in measure 10.

Measures 11-14. The right hand continues with triplet patterns, and the left hand maintains its accompaniment. A *mf* dynamic marking is present in measure 11.

Measures 15-18. The right hand continues with triplet patterns, and the left hand maintains its accompaniment. A *f* dynamic marking is present in measure 15.

Measures 19-22. The right hand continues with triplet patterns, and the left hand maintains its accompaniment. A *mp* dynamic marking is present in measure 19.

22

3 3 3 3 3 3 3 3 3 3 3 3

25

3 3 3 3 3 3 3 3 mp

29

f

33

rit. 3 3 3 p

Kontrabass

Pizza a tre

2. Pizza Verdi (Rucola u. Parmaschinken)

J.Johow
1.6.2014

Andante

♩=60



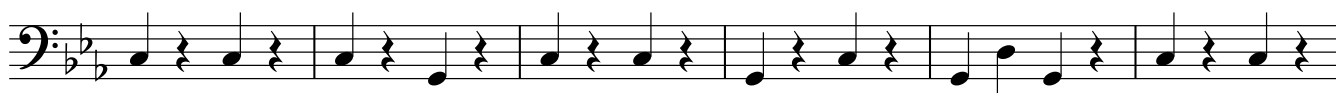
7



13



19



25



31

rit. .

