

Kontrabass

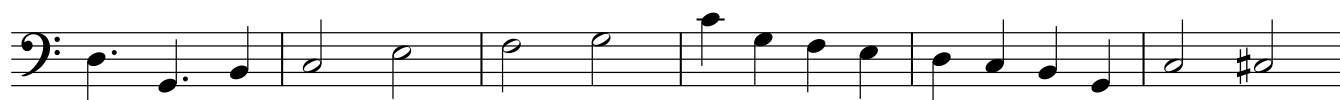
# 1. Rimini

$\text{♩} = 86$



*pizz*

8



14



20



26



31



37



44



51



56



# 2. Walzer

Joachim Johow

♩ = 141 swing

9

*pizz*

17

23

29

37

45

53

61

68

8 rit. . . . .

Kontrabass

### 3. Swinging Sunday

Vivace (♩=120)



8



15



22



29



36



42



## 4. A soft Rain

Allegro ♩ = 130

*pizz*

7

13

19

25 <sup>2.</sup>

31

37

42

49

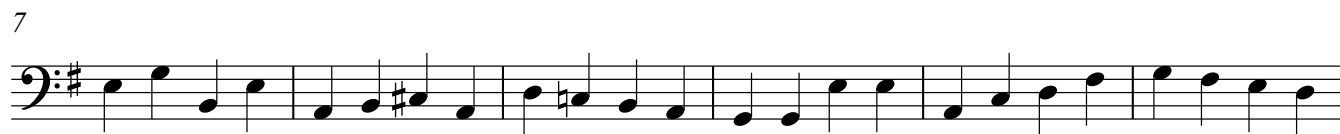
55

59

Kontrabass

# 5. Slow and Sweet

Moderato



Kontrabass

# 6. Breathless

Vivace ♩ = 171



*pizz*

8



15



21



26



33



40



47



51



## 7. Another blue Cat

Langsam ♩ = 82



8



15



22



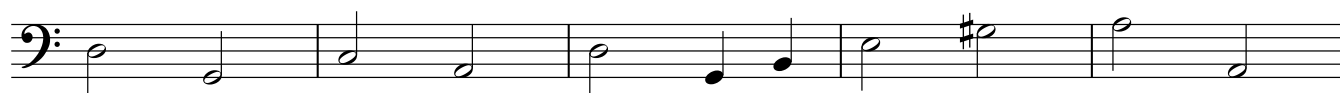
28



34



41



46



# 8. Happy Swinging

Vivace ♩=140

1  
*pizz*

Measures 1-6: Bass clef, 4/4 time. Measure 1 starts with a piano pizzicato instruction. The melody consists of quarter notes: G2, A2, B2, C3, D3, E3, F3, G3, A3, B3, C4, D4, E4, F4, G4, A4, B4, C5.

7

Measures 7-12: Bass clef, 4/4 time. The melody continues with quarter notes: D4, E4, F4, G4, A4, B4, C5, B4, A4, G4, F4, E4, D4, C4, B3, A3, G3, F3, E3, D3, C3, B2, A2, G2.

13

Measures 13-18: Bass clef, 4/4 time. Measures 13-17 are the first ending, marked with a bracket and '1.'. Measure 18 is the second ending, marked with a bracket and '2.'. The melody consists of quarter notes: G2, A2, B2, C3, D3, E3, F3, G3, A3, B3, C4, D4, E4, F4, G4, A4, B4, C5.

19

Measures 19-23: Bass clef, 4/4 time. Measures 19-22 are the first ending, marked with a bracket and '1.'. Measure 23 is the second ending, marked with a bracket and '2.'. The melody consists of quarter notes: G2, A2, B2, C3, D3, E3, F3, G3, A3, B3, C4, D4, E4, F4, G4, A4, B4, C5.

24

Measures 24-28: Bass clef, 4/4 time. Measures 24-27 are the first ending, marked with a bracket and '1.'. Measure 28 is the second ending, marked with a bracket and '2.'. The melody consists of quarter notes: G2, A2, B2, C3, D3, E3, F3, G3, A3, B3, C4, D4, E4, F4, G4, A4, B4, C5.

29

Measures 29-34: Bass clef, 4/4 time. The melody consists of quarter notes: D4, E4, F4, G4, A4, B4, C5, B4, A4, G4, F4, E4, D4, C4, B3, A3, G3, F3, E3, D3, C3, B2, A2, G2.

35

Measures 35-40: Bass clef, 4/4 time. The melody consists of quarter notes: G2, A2, B2, C3, D3, E3, F3, G3, A3, B3, C4, D4, E4, F4, G4, A4, B4, C5.

40

Measures 41-44: Bass clef, 4/4 time. The melody consists of quarter notes: D4, E4, F4, G4, A4, B4, C5, B4, A4, G4, F4, E4, D4, C4, B3, A3, G3, F3, E3, D3, C3, B2, A2, G2.



Kontrabass

# 9. Swinging Tarantella

Vivace ♩=140

7

*pizzp*

7

13

19

26

33

39

45

49

Kontrabass

# 10. I Mulini

♩ = 134

9

*pizz*

9

17

26

34

42

□ 1

6□

6□

74

Kontrabass

# 11. This lazy morning

Moderato (swing)



7



13



20



26



Kontrabass

# 12. Sunny

Presto (♩=1 □ □ □)

7

*pizz*

7

13

19

26

32

38

44

47

# 13. Friday Feeling

Vivace ♩=146)

8

*pizz*

8

15

21

27

34

41