

Rimini

13 swingende Duos
für
2 Violinen mit Harmonien für Gitarrenbegleitung
und Bassstimme

von
Joachim Johow

1. Rimini
2. Swinging waltz
3. Swinging sunday
4. Major
5. Slow and sweet
6. Breathless
7. Another blue cat
8. Happy swinging
9. Swinging tarantella
10. I Mulini
11. This lazy morning
12. Sunny
13. Friday feeling

Die Duos können auch wahlweise von Fl in der 1. Stimme und in der 2. mit Cl gespielt werden (Extraausgabe)

Mit den MP3s kann man sich die Stücke anhören oder als Begleitung zum Üben benutzen.

Das Coverfoto ist Eigentum des Herausgebers. Es stammt aus Meran und das Bild ähnelt dem Komponisten in jungen Jahren. Die Musik soll dieses Feeling einfangen.

Kontrabass

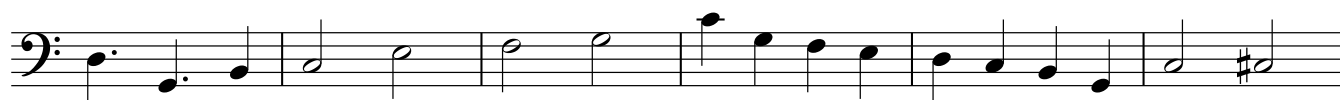
1. Rimini

$\text{♩} = 86$



pizz

8



14



20



26



31



37



44



51



56



2. Walzer

Joachim Johow

♩ = 141 swing

9

pizz

9

17

23

29

37

45

53

61

68

8

rit.

Kontrabass

3. Swinging Sunday

Vivace (♩=120)

pizz

8

15

22

29

36

42

Kontrabass

4. A soft Rain

Allegro ♩ = 130



7



13



19



25 ^{1.} _{2.}



31



37



42



49



55



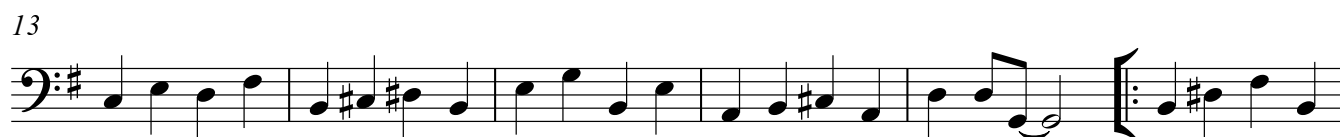
59



Kontrabass

5. Slow and Sweet

Moderato



Kontrabass

6. Breathless

Vivace ♩ = 171



pizz

8



15



21



26



33



40



47



51



7. Another blue Cat

Langsam ♩ = 82



8



15



22



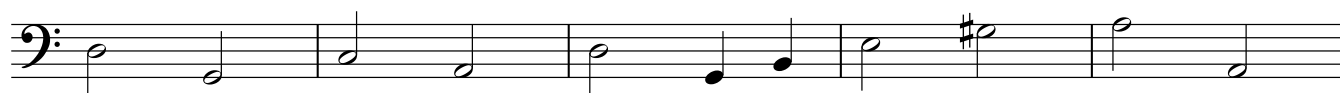
28



34



41



46



8. Happy Swinging

Vivace ♩=140

1. *pizz*

Measures 1-6: Bass clef, 4/4 time. Measure 1 starts with a *pizz* marking. The first six measures contain a melodic line with various intervals and accidentals, including a repeat sign at the end of measure 6.

7

Measures 7-12: Continuation of the melodic line from the previous system, ending with a repeat sign at the end of measure 12.

13

1. 2.

Measures 13-18: Continuation of the melodic line. Measures 15-18 are bracketed and labeled with first and second endings. The first ending leads back to measure 13, and the second ending concludes the phrase.

19

Measures 19-23: Continuation of the melodic line, ending with a repeat sign at the end of measure 23.

24

1. 2.

Measures 24-28: Continuation of the melodic line. Measures 26-28 are bracketed and labeled with first and second endings. The first ending leads back to measure 24, and the second ending concludes the phrase.

29

Measures 29-34: Continuation of the melodic line, ending with a repeat sign at the end of measure 34.

35

Measures 35-40: Continuation of the melodic line, ending with a repeat sign at the end of measure 40.

40

Measures 41-44: Final system of the piece, ending with a double bar line at the end of measure 44.

Kontrabass

9. Swinging Tarantella

Vivace ♩=140

7

pizzp

7

13

19

26

33

39

40

49

Kontrabass

10. I Mulini

♩=134

pizz

9

17

26

34

42

□ 1

6□

6□

74

Kontrabass

11. This lazy morning

Moderato (swing)



7



13



20



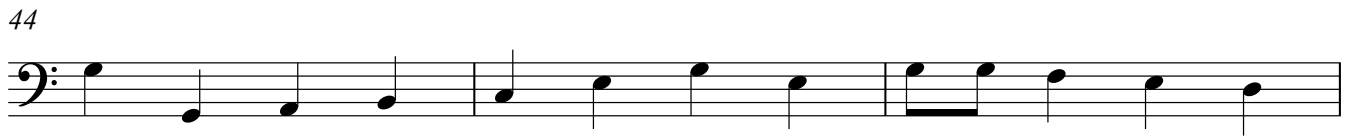
26



Kontrabass

12. Sunny

Presto (♩=1 □ □ □)



13. Friday Feeling

Vivace ♩=146)



8



15



21



27



34



41

